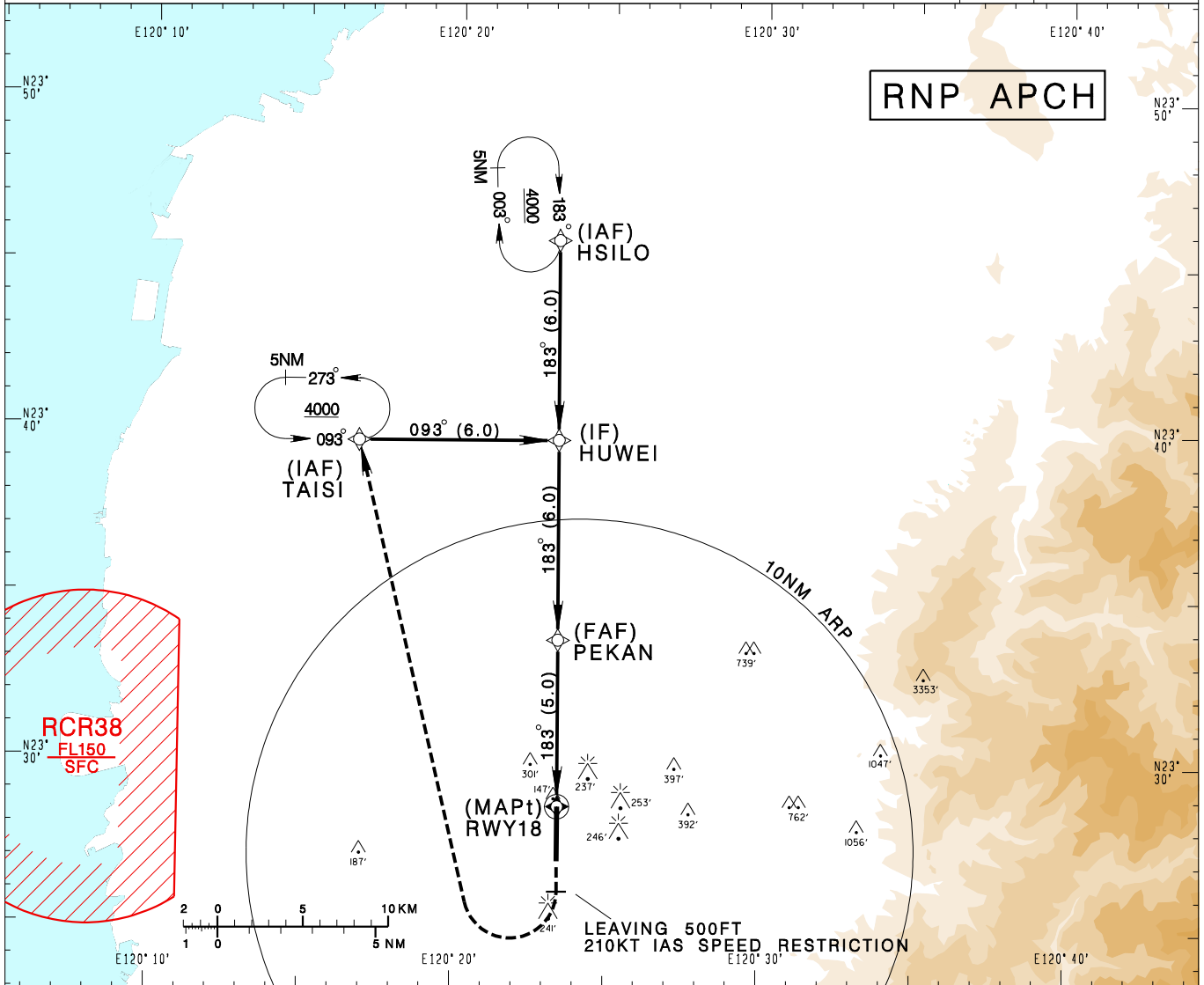


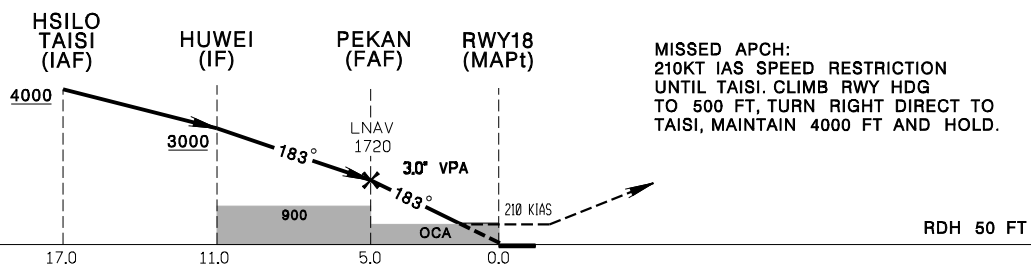
**嘉義機場**  
CHIAYI AD

RCKU  
RNP RWY18

KAOHSIUNG APP 120.6 301.0		CHIAYI TWR 118.6 236.6 275.8		VAR 3° W 	
Apt Elev: 85'	Rwy18 THR Elev: 75'	Trans Level: FL130	Trans Alt: 11,000'		
BEARINGS ARE MAGNETIC; DISTANCES ARE NAUTICAL MILES; ELEVATIONS, HEIGHTS IN FEET					



5	4	3	2	1.2	DIST (NM) to THR 18
PEKAN	1400	1080	770	510	DIST (NM) to Next WPT
1720					ADVISORY ALT



CHANGES: NEW PAGE NUMBER

MINIMA (OCA IN FT, VIS IN M, OCH IN FT)						NOTE 1. CIVIL AIRCRAFT USE WEST TRAFFIC CIRCUIT. 2. BARO-VNAV NOT AUTHORIZED BELOW 0° C. 3. ATS SURVEILLANCE REQUIRED WHEN RCR38 IN USE. 4. CAUTION OBSTACLES (TREES) UP TO 147FT PENETRATE THE VISUAL SEGMENT SURFACE (VSS).
CATEGORY	A	B	C	D		
LNAV/VNAV	443/1700 368	443/1700 368	443/1700 368	443/1700 368		
LNAV	500/1700 425	500/1700 425	500/2000 425	500/2000 425		